



Mounting Instruction

Triumph 955-1050 footrest kit (306101)



Installation time : 120 minute

- Tools requirement:
- 1) Allen wrench 4-5-6 mm.
 - 2) Open-end box 8-10-12-13-14mm.
 - 3) Brake Fluid
 - 4) Medium Thread Locker



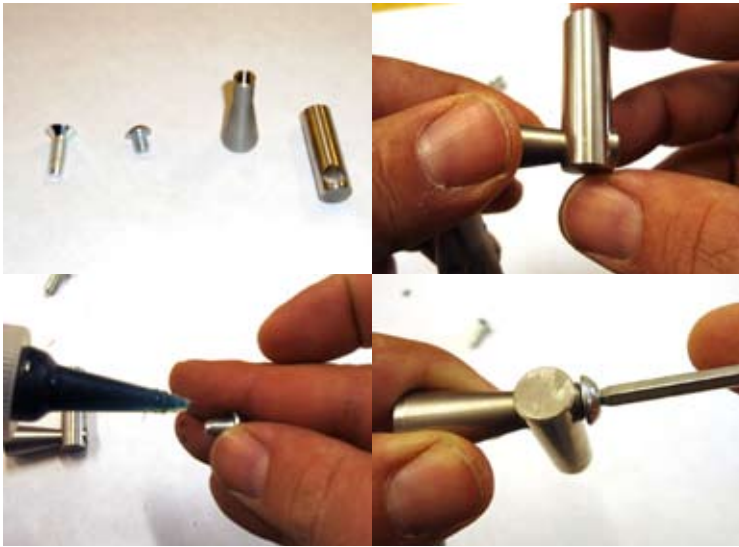
1

Insert the flathead bolt M6x20, add thread lock and tighten, same as picture.



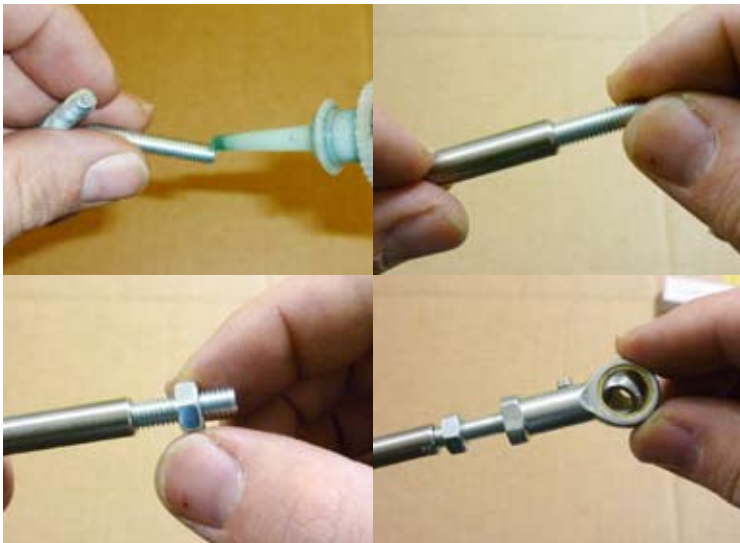
2

Insert the flathead bolt M6x20, add thread lock and tighten, same as picture.



3

insert components, same as picture.
add thread lock and tighten M6x8 bolt.



4

Place threaded rod m6 on Shift Rod using thread lock.
Insert nuts and uniball.



5

Insert m6x25 flathead bolt and washer.
Screw lock nuts.



6

Fasten lock nuts.
On the opposite side to insert the bolt M6x30 and
thickness, same as photo.
Add thread lock, and tighten on shift lever.



7

Enter eccentrics on the plate left and right.
Secure with M8x50 allen bolts.



8

Install heel-guard bracket, using M6x18 bolts, add
thread lock.



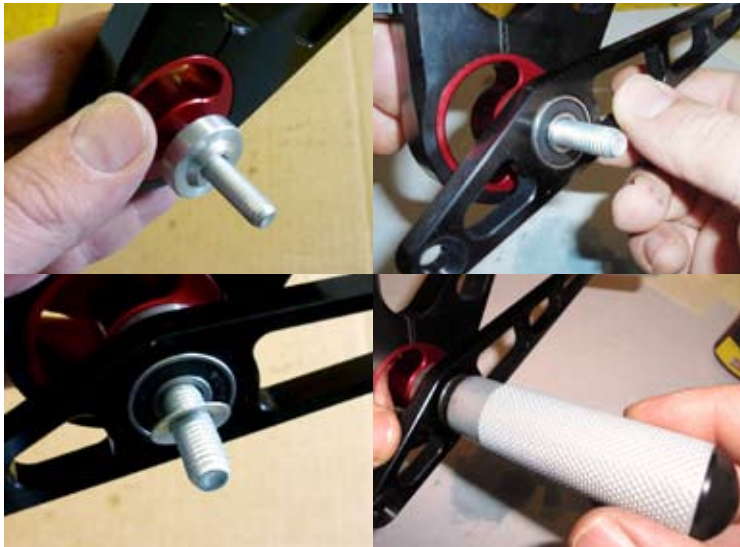
9

Install right heel-guard.



10

Insert m8x45 allen bolt on left plate.
Enter in sequence thickness, shift lever, and thickness
m8x4/10.
Fasten foot-rest.



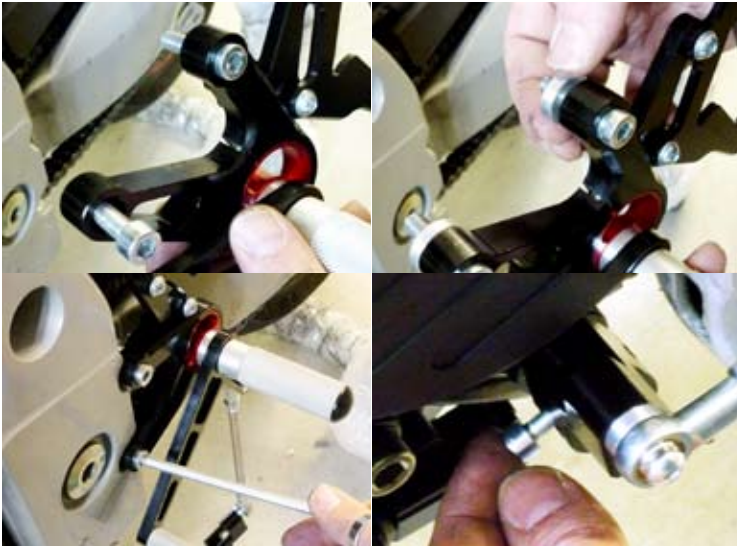
11

Insert m8x45 allen bolt on right plate.
 Enter in sequence thickness, brake lever, and thickness
 m8x4/10.
 Fasten foot-rest.



12

Remove the oem shift lever.
 Remove the left footrest.



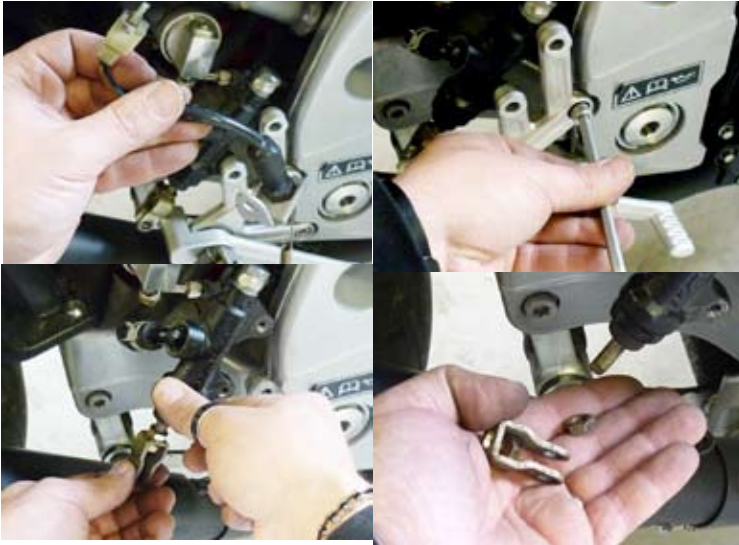
13

Insert the M8x30 bolts and shims on the left footrest.
 Fasten foot rest.
 Adjust the position of the footrest.
 Insert new shift lever, secure with m6x25 allen bolt.



14

Disconnect the brake switch.
 Remove the clip and the pin that connects the master cylinder.
 Remove the heel guard oem .



15

Remove the brake switch.
Remove right foot rest oem.
Remove the nuts and bracket from the brake master cylinder.



16

Screw nuts m8.
Screw new bracket on master cylinder.



17

Insert the M8x30 bolts and shims on the right footrest.
Fasten foot rest.



18

Adjust the position of the footrest.
Secure the master cylinder and heel guard with bottomhead bolts
M8x30.
With flathead bolt M6x25 connecting the brake lever to master
cylinder.



19

Only brake light switch kit cod. 113810.

Protect the pump from leaking brake fluid with a cloth or paper.

Remove the oem threaded nozzle and replace it with brake light switch and washers including .

Connect brake light switch.

Bleed the rear brakes.

